



the  
UNIVERSITY  
of  
GREENWICH



# Renal Disease

Twelve-week course starting April and October

**BioMed Online Learning**

[www.greenwich.ac.uk/biomed](http://www.greenwich.ac.uk/biomed)



# Renal Disease

## This course has been designed for:

- Biomedical scientists
- Clinical scientists
- Allied health professionals
- Doctors, especially junior/trainee pathologists
- Nurses
- Paramedics

## When you have completed this course, you will be able to:

- Understand the changes that occur in renal failure and their effects on the body
- Have a detailed knowledge of the classification and pathology of diseases of the glomeruli, the renal tubulo-interstitium, the renal vasculature, and of the developmental disorders of the kidney
- Have a detailed knowledge of the classification of benign and malignant tumours of the kidney
- Demonstrate an awareness of appropriate investigative tools and use these skills, with critical insight, to evaluate findings of case studies and formulate innovative proposals
- Use the Internet as a communication tool as well as a tool to find and evaluate relevant information
- Produce reports to professional standards
- Produce materials for public presentations



## Course Content

The course comprises two components:

### *A face-to-face workshop*

- Introduction to WebCT, your tutor, and your course;

### *Guided online study of the following eight topics:*

- **The normal kidney** - anatomy and physiology
- **Renal failure** - classification and consequences
- **Glomerulonephritis** - classification of diseases of the glomeruli
- **Glomerular diseases - glomerulonephritis - diabetes mellitus and amyloidosis**
- **Tubulointerstitial diseases**
- **Vascular diseases**
- **Developmental disorders of the kidney** - general concepts of embryological development and the specifics of renal development
- **Tumours of the kidney** - an introduction to general concepts of neoplasia

## Study where you want, when you want, supported online by a tutor

- Take an accredited short course
- Gain 30 credits at Master's level
- Gain 100 Continuing Professional Development credits for portfolio and registration
- Can be used towards an IBMS accredited MSc in Biomedical Science (Online)

## Biomed courses train you to:

- Use Internet-based applications
- Make effective presentations
- Use real-time chat rooms and discussion groups to support reflective learning

## Biomed courses offer you:

- Online support from specialists in the field
- Online access to fellow students
- Self-assessment and quizzes to support your progress
- Rapid, meaningful feedback

The programme is accredited by the Institute of Biomedical Science.

# Renal Disease

## Enquiries

Name .....

Company name .....

*Please send me further information on the following course(s):*

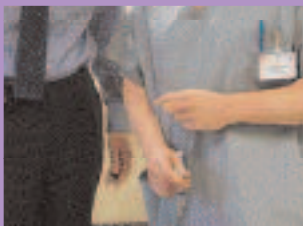
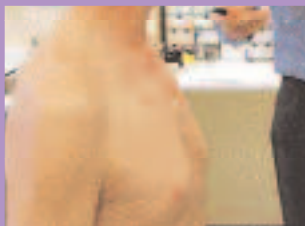
- ☐ Quality Systems Management
- ☐ Implementing Advanced Quality Management
- ☐ Management of Healthcare Associated Infection
- ☐ Point of Care Testing
- ☐ Robotics and Automation
- ☐ Gene Structure and Function
- ☐ Analysis of Nucleic Acids
- ☐ Bioinformatics
- ☐ Renal Disease
- ☐ Lung Disease
- ☐ Diagnosis of Breast Cancer
- ☐ WebCT Training for Course Creators

Address .....

.....  
.....  
.....

E-mail .....

Telephone .....



Return in envelope to:

**Cathy Ronan**

BioMed Administration Manager

Grey Building

Southwood Site

Avery Hill Campus

Avery Hill Road

Eltham

London SE9 2UG



### **BioMed Online Learning**

Grey Building  
Southwood Site  
Avery Hill Campus  
Avery Hill Road  
Eltham  
London SE9 2UG

Telephone: 020 8331 9978

E-mail: [biomed@gre.ac.uk](mailto:biomed@gre.ac.uk)



**This document is available  
in other formats on request**

BioMed courses are owned by the BioMed Consortium,  
comprising 17 NHS Trusts, the Health Protection Agency  
and the University of Greenwich